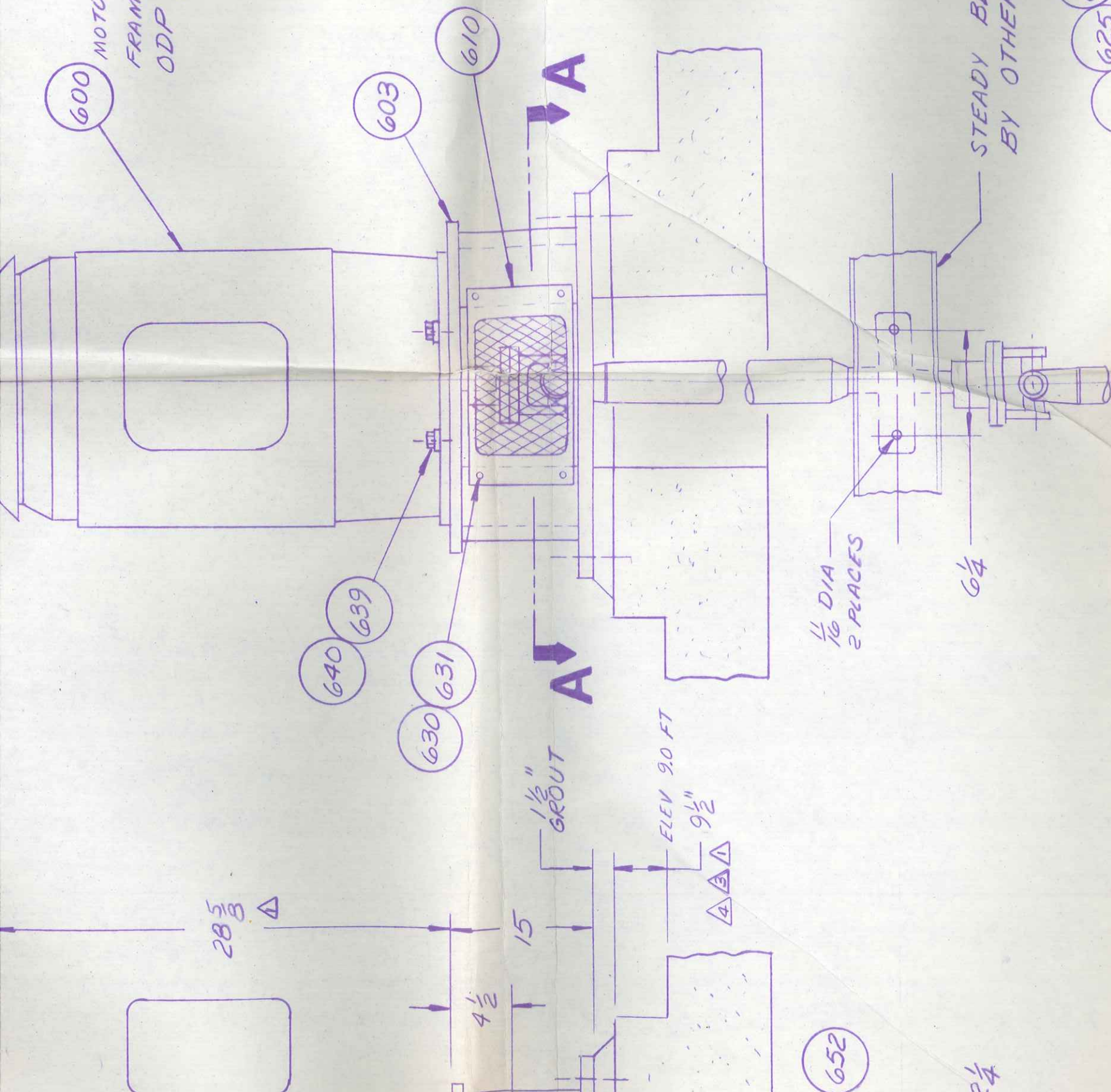


MOTOR, 100 HP, 175
 FRAME NO. 404 HP
 ODP, 3 PH, 60 HZ,

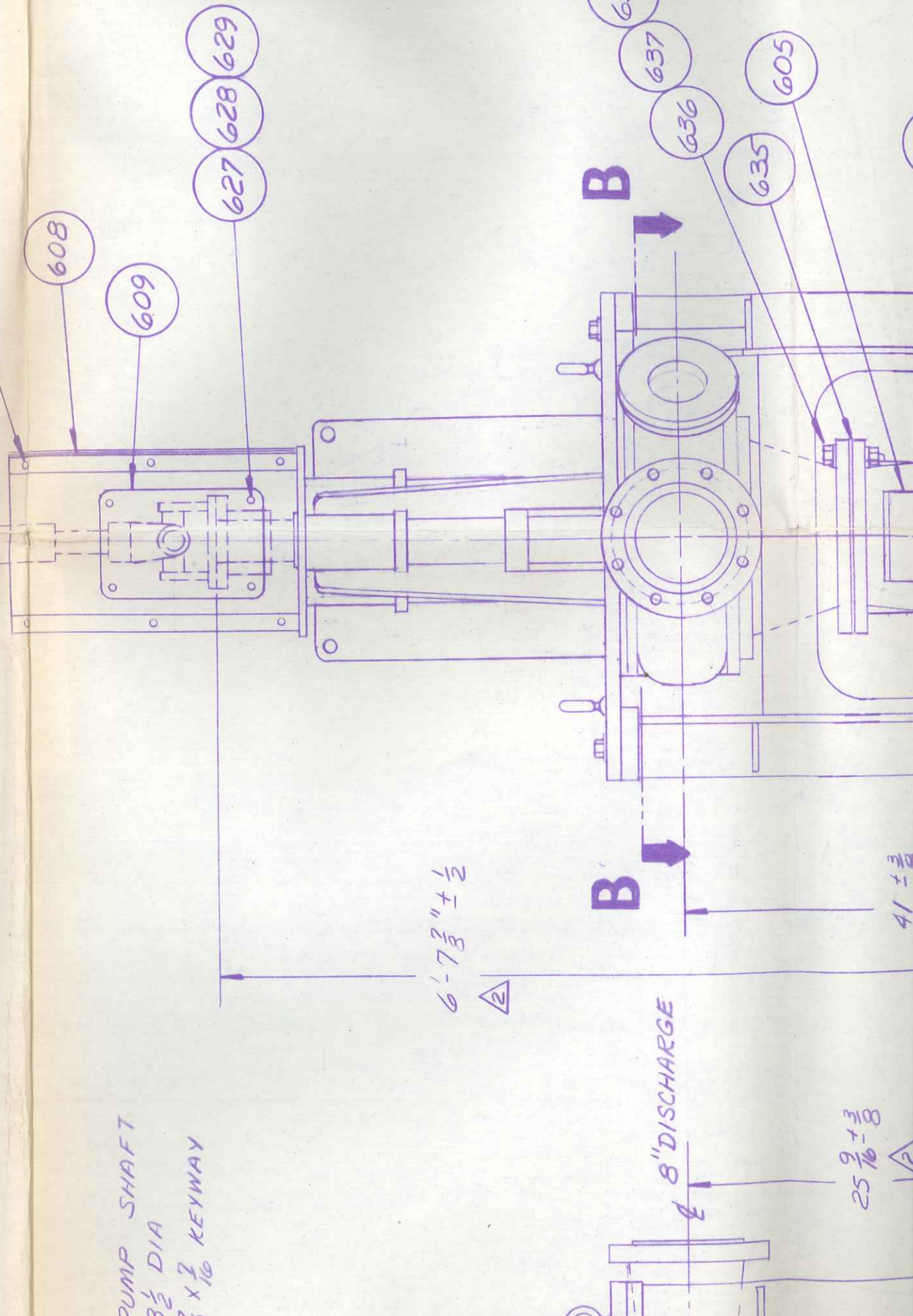


STEADY BEARING SUPPLY
 BY OTHERS

1/16 DIA
 2 PLACES

604

PUMP SHAFT
 3 1/2 DIA
 7 X 7/16 KEYWAY



8" DISCHARGE

4 1 +/- 3/8

600

603

610

640

639

630

631

652

624

625

626

608

609

627

628

629

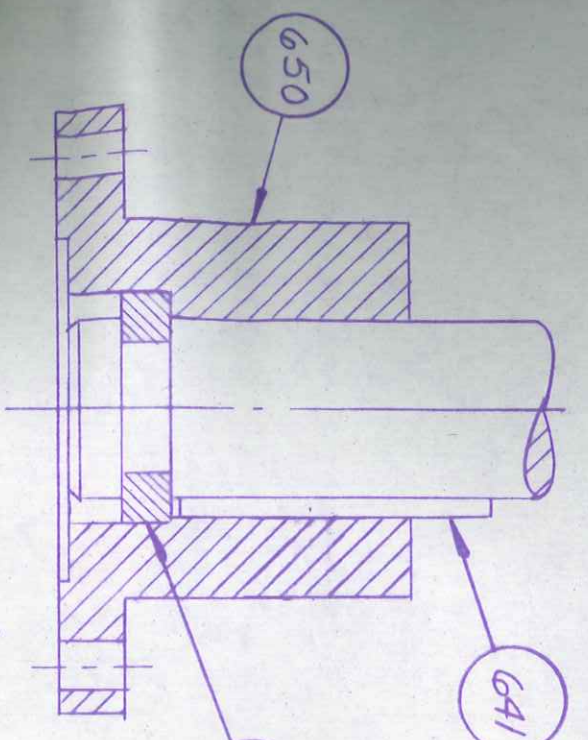
638

637

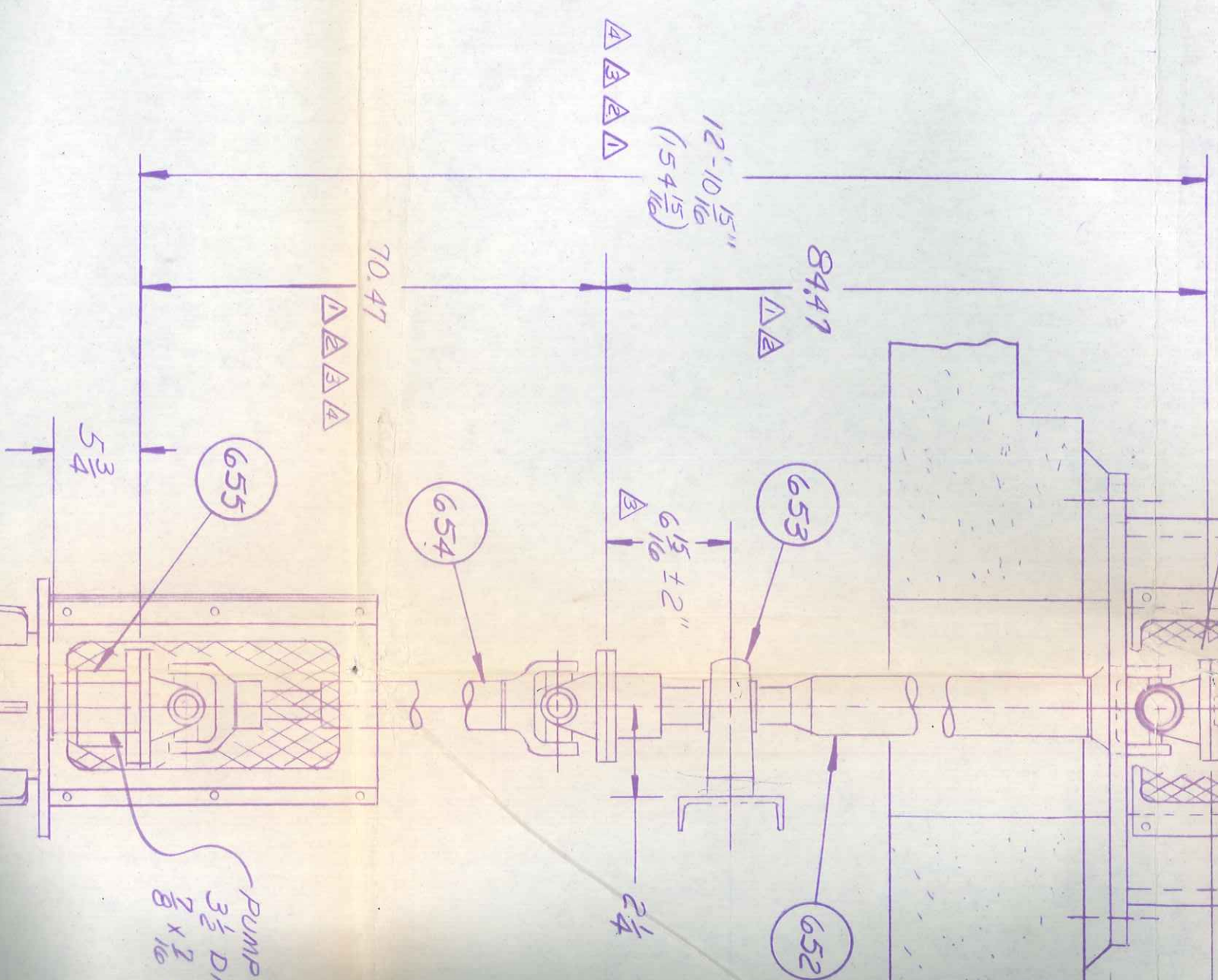
636

635

605



MOTOR SHAFT
 $\frac{1}{8}$ DIA
 $\frac{3}{8} \times \frac{3}{16}$ KEYWAY



PUMP
 $3 \frac{1}{2}$ DIA
 $2 \times 2 \times \frac{1}{8}$

