

Part 3 – Photos

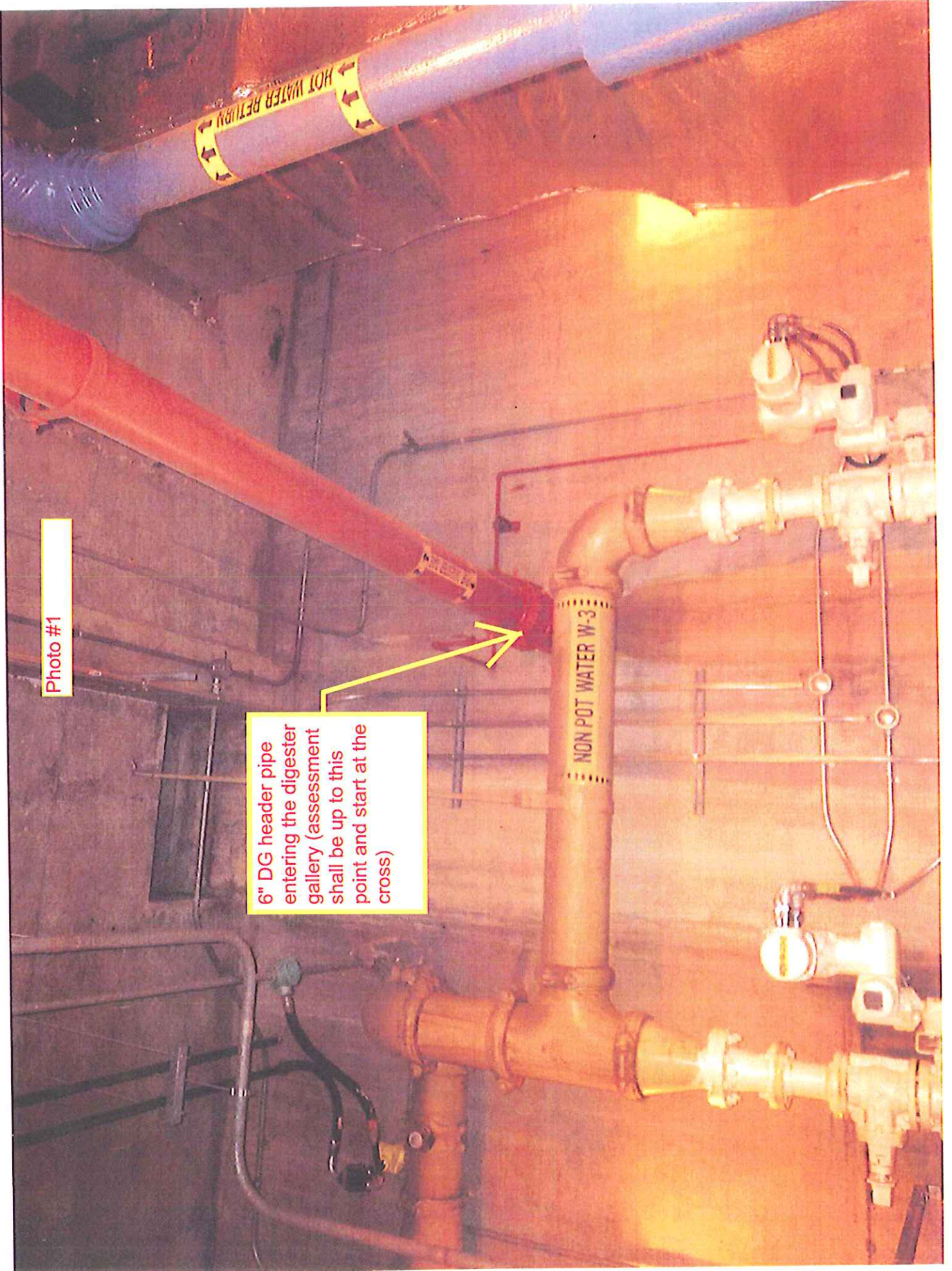


Photo #1

6" DG header pipe entering the digester gallery (assessment shall be up to this point and start at the cross)

Photo #2

West Gas Sphere -
Install 6" Spectacle
Blind



Photo # 3

Install new 3" diameter HDPE Pipes thru the existing wall openings

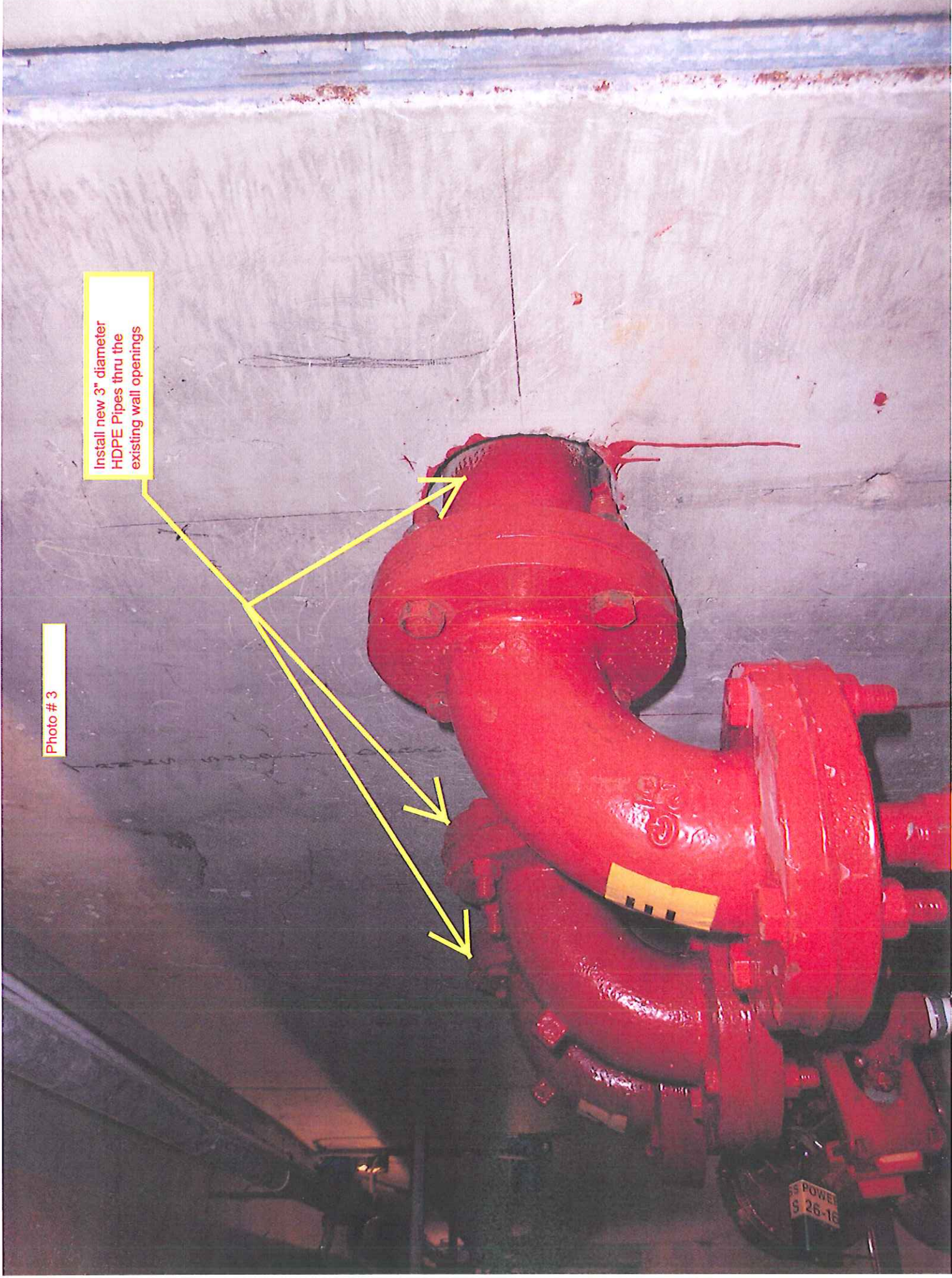


Photo #4

View looking East - shows the existing condensate piping in the utility tunnel



Part 4 - Drawings